



Texas Gulf Coast Fern Society

March 2011

Vol. 13, No. 3

<http://www.tgcfersoc.org>

**Next Regular Meeting: Sunday, March 20, at 2:00 p. m. – Houston Garden Center in Hermann Park,
1500 Hermann Drive, Houston, TX 77044 – Phone: (713) 529-3960**

A message from our President:

Hi Everyone!!

First, I would like to address all those who attended the February meeting. I'm truly sorry about the parking conditions. I will be attending the Federation meeting on the 12th where this subject is going to be discussed among other topics. The current explanation as to why we are experiencing this parking dilemma is that, due to cuts in funds, the Garden Center had to let the Security officers who put up the no parking cones for the different Society meetings go. Unless something is resolved at the Federation meeting, we do not have a lot of options. It was suggested by the Garden Center that we change our meeting time to a less busy time of the day or night for the park or we have someone arrive early, place cones out, and over see them until the members arrive. Neither are great options. I will keep you posted, but I doubt that parking will be much better at our March meeting, so please plan on arriving early. We will have to work together to get everyone parked and in for the meeting on time.

I would like to thank last month's speaker Joan Hudson, (who has joined our Society), for another outstanding presentation on fern allies *Lycopodium* and *Selaginella*, their reproduction styles and how they have proven their longevity over hundredths of thousands of years. She also brought in examples and fossils. We were able to see the cones that make up the spore with drawings of the cross sections to better understand how reproduction occurs.

For those who were unable to attend the February meeting, we put out a survey to help with the direction of the Society. Thank you to those who took the time to fill them out and turn them in. We will have some extra copies at the March meeting for anyone who did not get a chance to participate. We will be going over the results of the survey with the membership as part of our business meeting. Everyone's input is extremely valuable.

On a lighter note, "Spring is in the Air". Sure makes you want to get out there and plant our little hearts out. I was talking to Walt Hesson about this and he was reminded by something his father, who farmed, used to tell him...."when Easter falls late, you never know what the weather is going to do". The Spring Equinox is the 20th of March, so that is the official start of Spring, but this year, the first full moon after

the Spring Equinox does not occur until the 17th of April. That is almost a full month later. Those who plant by the moon know what we are talking about. So plant with care, we may be in for a bumpy ride yet.

To all our new members we want to offer you a warm 'Welcome' to our Fern Society. I'm looking forward to getting to know each of you as well as all our members.

Take care and see you soon.

Darla



A message from our Vice President:

Oh Boy, Oh Boy! Oh Girl, Chrissy is here! March 2011

Oh boy, are we ever fortunate. Ray Roberts has graciously opened their wholesale operation of ferns for the 'growth' of our society.

For two decades, Central Florida Ferns & Foliage has been a family owned and operated wholesaler of exotic and tropical ferns. Having "roots" in this industry from two generations back, Ray and Kathy Roberts are pleased to have their son, Matt Roberts, joining them with added energy and new ideas.

Working for some of the original fern grower families who were linked to bringing the Boston fern into the area, Ray's desire to try more interesting varieties of fern has proved successful.

His own personal "collection" house will entice you also to admire the beauty and uniqueness of the fern "world". Known for growing the more unusual varieties whenever they are available, Central Florida Ferns has found their niche is growing funky, interesting plants, as well as the ferns you may already know and love.

This opportunity will allow us to afford 4 inch or even larger potted ferns, greatly increasing their survival rate. Along with Casa Flora, we will have a considerable wealth of ferns at our disposal. To "Harold" our new partnership with Central Florida Ferns, we will have 4 inch pots of the brand spanking new this year *Asplenium antiquum* "Chrissy", a crested bird's nest fern.

We will start off this month's program with a power point presentation on bird's nest ferns from Darla's trip to Pohnpei.

We'll have live plants to compare in this group of Aspleniums and learn some of what makes them different from each other. Then, we will have pots to plant our new babies in and Larry Rucker will guide us in the proper planting, care, and feeding of our new charges. **Each fern will be \$5.00 and the workshop fee, if you wish to participate, will be \$5.00 for materials for one plant only.** Next year, we can have a one year reunion to see how well we have been in parenting. We will have a special parenting class for those who have killed their children!!!

And if this isn't exciting enough, there is another brand spanking new relative to "Chrissy" named "Leslie". A regular bird's nest family, by golly!

Submitted by: Jessica Sheldon, Vice President



Upcoming Field Trip:

Rodeo Time! March 2011

You might not be thinking rodeo, I'm not, but there are some unsavory guests at Little Thicket. They run, grunt, snort, but worst of all, they root; up root is more like it. A herd of wild boar has set up residence in the Little Thicket and has left some evidence of destruction. The full extent has yet to be determined, which has an indecisive, inconclusive, and inevitable impact on our field trip next month for stalking wild ferns. Wild ferns, not wild boars! Maybe we can get some cowboys to rustle them critters up.

So here's what we're gonna do, pilgrim. We're gonna plan the field trip and by the time next month's newsletter comes out, we will know if the trip is on or off.

- When: April 17th, 2011
- Where: Little Thicket Nature Sanctuary- see map, about a 1 ½ hour drive north of Houston
- Wear: Hiking boots or sturdy walking shoes, long trousers - hiking 2-3 miles, but might have the option of riding a tractor pulled wagon, pilgrim
- Bring: Drinking water, brown bag lunch, maybe insect repellent.
- Facilities: Rest rooms are available, but there is no running water.
- Rules: NO COLLECTING
- Time: 10 am to 3 or 4 pm

There will be a sign up sheet at the meeting for people who can drive and people who need a ride. We'll get the wagon train goin' and have ourselves a hee haw time!

Submitted by: Jessica Sheldon, Vice President



Refreshments:

Refreshments for February were generously furnished by:

Drinks:	Jean and Ted Richardson
Chips & Dip:	Patrick Hudnall
Fruits/Veggies:	Darla Harris
Desserts:	Marcia Livingston & Beth Ayer
Service ware:	Cherie Lee

Refreshments for March will be generously furnished by:

Drinks:	Mary McConnell
Savory:	Faye Stansberry
Fruits/Veggies:	Darla Harris
Desserts:	Cherie Lee
Service ware:	Cecil Strange

Please let Cecil know if you can help with the refreshments for future months: c2strange@comcast.net or 281-481-3884. Come out and enjoy some really delicious food!



Welcome New Member

Joan Hudson

Please welcome her at our next meeting.

Submitted by: Mary McConnell, Membership Chair



2011 Dues:

2011 dues are now being accepted. If you haven't paid for 2011, please complete the membership form and return it with your payment to our Treasurer Terri Dolney or our Membership Chair Mary McConnell at our next meeting or mail it to:

Mary McConnell
6218 Wister Lane
Houston, TX 77008

TGCFS dues amounts:

Individual:	\$10.00
Family:	\$15.00
Student:	\$ 5.00

Please make your checks payable to Texas Gulf Coast Fern Society or simply TGCFS.



Arachnoides simplicior

Pronunciation: a-rak-nee-OH-dees sim-PLIK-ee-or

Meaning: Spider-like

Common name: East Indian Holly

For those of you who are saying to yourself, 'give me anything that will not freeze', this is the fern for you. This is a picture of mine with the dusting of snow that we got in February. This fern does very well in part shade to full shade. I have found once established it is pretty drought tolerant, has taken our hot summers well, and took our cold spells of the last two winters without missing a beat.

The East Indian holly fern is a Hardy fern for us and evergreen. It is a medium-sized fern, about 18" tall and wide. I have found it to be a slow grower, but pretty self-sufficient, not needing much in the way of grooming. Other than its hardiness, it is grown for its dark green leaves with a burst of yellow/gold down the center of the midrib of each lance-shaped leaf. The leaves are very spaced out and there are not a lot of them. It is not the greatest for a potted plant, but looks nice in the ground and in groupings of three spaced out about 18".

I really like this fern!! For this fern, I would buy a large one now. Watching it grow up from a starter is almost like watching paint dry...



Submitted by: Darla Harris



Gardening Tips

This topic is a new addition to our newsletter. It will appear on a monthly basis as long as you all send me e-mails or telephone (me) with your tips or suggestions or ideas of things that might help others with their gardening. This *does not* have to pertain to just "Ferns".

Thanks to all who will contribute to this new endeavor!

Submitted by: Jean Keiser



2010 Officers and Committees:

President:	Darla Harris
Vice President:	Jessica Sheldon
Secretary:	Cherie Lee
Treasurer:	Terri Dolney
Board Members at Large:	Sharon Banister, Donna McGraw, and Lulu Leonard
Membership Chair:	Mary McConnell
Ways and Means:	Ted Richardson
Special Projects:	Larry Rucker
Web Master:	Malcolm McCorquodale
Newsletter:	Cherie Lee
Library:	Frank Lee
Raffles:	Larry Rucker
Spore Exchange:	Patrick Hudnall
Hospitality:	Cecil Strange
Welcoming at Door:	Marcia Livingston



Library

We encourage you to take advantage of the great resource of information available in our library. At each meeting there are take-home sheets that contain a brief review of available books. Also at each meeting is a wide variety of books and videos available for immediate checkout.

Don't forget to visit our web site (see link in header, page 1) and click on **Library** to see the current list of books available. There you will see some pictures of the books we have and links to reviews at Amazon and elsewhere.



March Book Review

"A Field Guide to the Ferns and Their Related Families"
by Broughton Cobb

This unabridged paperback edition is a completely illustrated pocket guide to all the species of ferns, horsetails, clubmosses, spikemosses, and quillworts found in a major portion of the North American continent. The clear text and precise drawings are based on the Peterson Field Guide system of visual identification and make this a book readily understood by the beginner, yet authoritative enough to meet the demands of the professional biologist. There are over 500 illustrations showing both the full plant and details of spore cases, leaf patterns, and other diagnostic characters.

The author has included two separate sections by other botanical experts, one on the geological history of ferns and the other on the creation and care of a fernery. The many closely related species to be found in the British Isles and Western Europe are described in a brief chapter featuring a key of plant silhouettes that leads the reader instantly to proper identification.

Submitted by: Frank Lee



**Texas Gulf Coast Fern Society
Board of Directors Meeting
February 20, 2011**

Meeting held at the Houston Garden Center, Houston, Texas with President Darla Harris presiding and calling the meeting to order at 1:20 PM.

Members Present: Darla Harris – President
Jessica Sheldon-Vice President
Cherie Lee – Secretary
Terri Dolney – Treasurer
Sharon Banister
Lulu Leonard
Donna McGraw

**Committee Chairs
and Guests Present:** Mary McConnell
Larry Rucker

Budget: Darla Harris led a discussion on the budget for 2011. Terri Dolney reviewed the Income and Expenditures for 2010. Items discussed and amounts agreed to by the Board included:

Speaker fees	\$1000 budget if have an out-of-town speaker with airfare \$ 500 budget if don't have an out-of-town speaker
Newsletter	\$ 200 stamps and envelopes-assumes continue mailing ~23 newsletters
Raffle/Store	Board approved having Larry Rucker purchase plants for special raffles at meetings to help increase raffle revenue, \$25 per plant limit
Website	\$30 for domain name (\$20) & site (\$10)- Malcolm McCorquodale handles
Party meat	\$100 for Holiday Party

By-Laws: Cherie Lee provided the Board members with copies of the amended By-laws based on Darla's research of past newsletters. Cherie will provide By-laws to Malcolm McCorquodale to post on the website and to Mary McConnell to print and provide to members at the March meeting.

Membership List: Mary McConnell provided the Board with copies of the latest membership list. Quarterly, she will print and provide membership lists to members at meetings starting with March.

New Membership: Mary McConnell will coordinate activities.

March Mart 3/24-3/26 – Mercer requested knowledgeable volunteers to assist - Donna McGraw volunteered to organize and solicit member interest/volunteers

Meeting Plants: Jessica Sheldon will look for rarer plants to order for member purchase. Price charged for plants will include additional \$0.50 per plant to offset cost of unsold plants.

Marketing: Committee looking at putting information into local papers. Should Society have a sale this year? Should Society participate in Home & Garden Show and/or Mercer

Fall Sale with either a display to attract new members and/or a sale?

Mercer Arboretum: Mercer has requested help with conservation project, fern gardens, and providing fern lectures in addition to March Mart, will poll membership for interest.

Parking: Darla to speak to Mary at Garden Center about lack of parking for meetings.

Meeting adjourned at 2:10 PM.

Submitted by: Cherie Lee, Secretary



**Minutes of General Meeting, February 20, 2011
Texas Gulf Coast Fern Society**

A regular monthly meeting was held at the Houston Garden Center, Houston, Texas. The meeting commenced at 2:15 PM with President, Darla Harris, calling the meeting to order.

A survey was handed out to the members who were present to obtain input on the desired direction of the Society.

Treasurer Report: Treasurer Terri Dolney provided an updated report on the 2010 income and expenditures which resulted in a net expenditure of approximately \$200 for 2010.

Mercer Arboretum: Mercer has requested help with March Mart, conservation projects, fern gardens, and providing fern lectures. If anyone is interested in participating, please contact the following members:

Donna McGraw	March Mart
Jessica Sheldon	Fern garden / conservation projects
Darla Harris	Fern lectures / training programs

Upcoming Programs/Meeting: VP Jessica Sheldon announced that the April meeting will be a field trip to the Little Thicket in East Texas, more information to follow.

Sphagnum Moss: Wayne Dupont graciously offered to obtain sphagnum moss at a very reasonable price for anyone interested. Cherie Lee took orders for Chilean sphagnum moss and will place a group order.

Program: Dr. Joan Hudson, Associated Professor of Biology at Sam Houston State University and editor of the Fiddlehead Forum, the American Fern Society newsletter, presented a very interesting program on Lycopodium and Selaginella and their reproduction styles. Microscopes were available to get a close up look at the cones and spores.

Two fern allies, Selaginella plana "Cypress Spikemoss" and Selaginella kraussiana "Brownii" "Pin-cushion Spikemoss", were available for purchase at cost and Ted Richardson prepared plant data sheets for members to add to their notebooks.

Plant Raffle: Larry Rucker ran the plant raffle with many plants finding new homes.

Meeting was adjourned at 4:15 PM.

Submitted by: Cherie Lee, Secretary



Editor's Comments:

As most of you are aware, the Newsletter is posted on the TGCFS website at the same time as it is mailed out to the members. In an effort to save money on mailings, it has been suggested that email notification be sent that the Newsletter has been posted on the website instead of mailing the Newsletter. Members can then visit the website to view the Newsletter and print it for themselves if they wish. **If you have not done so already, please let me know if you are willing to accept the email notification and forgo the mailed Newsletter.** You can contact me by calling 281-999-8368, emailing cherie.d.lee@sbcglobal.net, or let me know at the next meeting. If I don't hear from you, you will continue to receive the Newsletter as usual. Thanks.

Deadline for the April Newsletter is April 1, 2011.

Cherie Lee, Editor, *TGCFS Newsletter*



Upcoming Events – Other Societies in Houston Area:

If you have the time and would like to expand your horticultural activities, take note of the following announcements by the Houston Bromeliad and Orchid Societies.

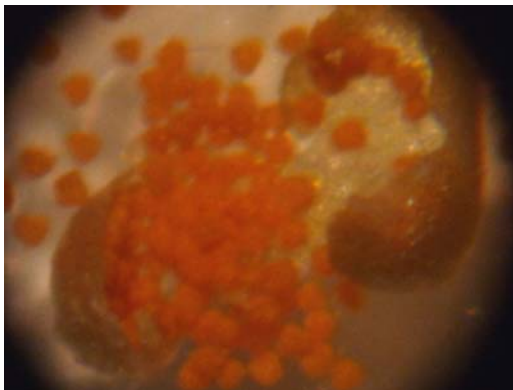
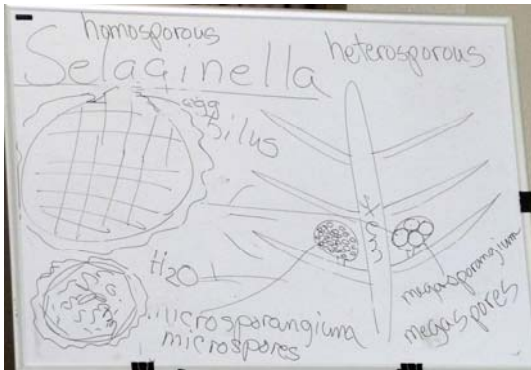
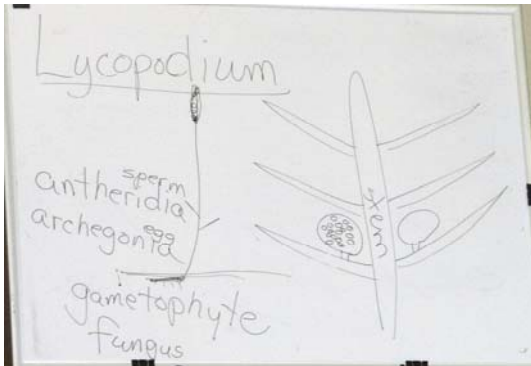
Bromeliad Society/Houston Inc.
www.bromeliadsocietyhouston.org

Regular meetings are held the third Tuesday of every month at 7:30 PM at the Houston Garden Center.

Next regular meeting is March 15, 2011.

Spring Sale – March 26, 2011
 Gethsemane United Methodist Church
 6856 Bellaire Blvd. (east of the SW Freeway)

February 20, 2011 TGCFS Meeting




The Houston Orchid Society, Inc.
www.houstonorchidsociety.org

Regular meetings are held the first Thursday of every month at 7:30 PM at the Houston Garden Center.

Next regular meeting is April 7, 2011.

Wonders of the Orchid World



**The Houston Orchid Society
 2011 Show and Sale**

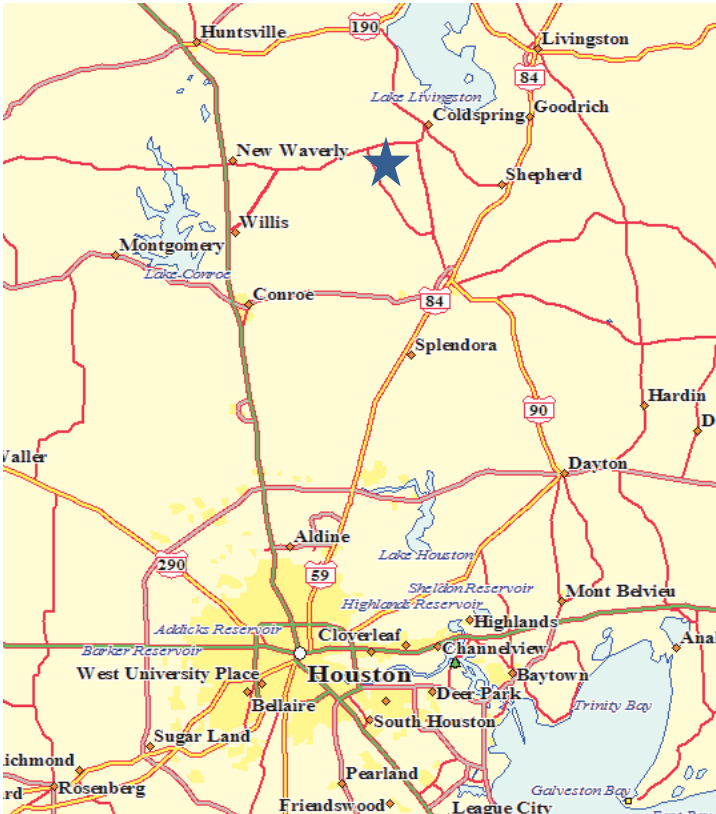
**Houston Museum of Natural Science Main lobby
 5555 Hermann Park Drive
 Houston, Texas 77030**

April 16 - 17, 2011

Saturday 9AM to 5PM Sunday 9AM to 4PM

April 17th Field Trip to the Little Thicket Nature Sanctuary

2001 FM 945 South, Cleveland, Texas



Directions to the sanctuary (GPS at entrance gate: N 30° 32.141' W 95° 13.564')

Route 1 — US 59 via Cleveland

Take US Highway 59 north to Cleveland; turn left on FM 2025; go five miles and turn left on FM 945. Go 11 miles to the entrance on your right.

Route 2 — I-45 via Willis

Take I-45 north to Willis; turn right on FM 1097 to SH 150; go approx. 9 miles to FM 945 South; turn right. Go two miles to the entrance on your left.

Route 3 — I-45 via New Waverly

Take I-45 north to New Waverly; turn right on SH 150; go approx. 17 miles to FM 945 South; proceed as above.